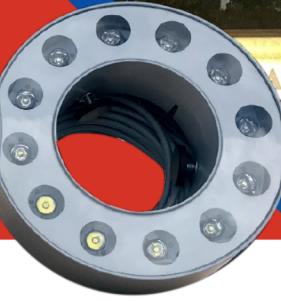
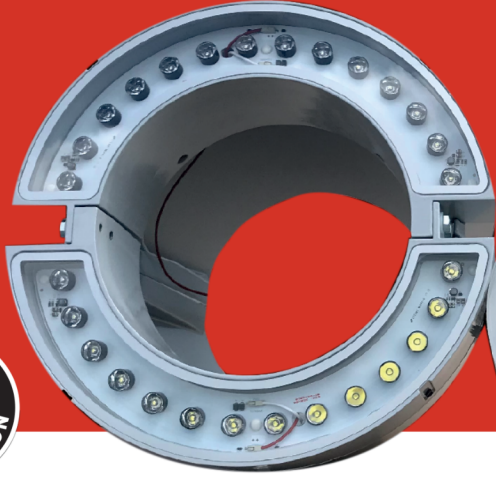


O², EXTENDED, AND BASIC LIGHTS



MORE VISABILITY

The PoleLED O2, Extended, and Basic uplights contain LEDs arranged in a circular unit. Giving off light from every angle ensuring that your flag is fully illuminated at all times.

HOW IT WORKS

- CREE LEDs create a clear and uniform light distribution
- PoleLED lighting units can be used on almost every type of existing and new poles. Including: Aluminum, wood, fiberglass, or steel
- Made of Aluminum
- Patented and developed focusing on sustainability and energy efficiency.
- Available in 3 Sizes
- The PoleLED Extended and O2 are fully customizable
- Theft is virtually impossible

	O ²	EXTENDED	BASIC
Wattage	90 Watt	38 Watt	24 Watt
Light output	9500 Lumen	3250 lumen	2300 lumen
Voltage	24 volts DC	24 volts DC	24 volts DC
Lifetime LEDs	+50,000 hours	+50,000 hours	+50,000 hours
Material	Aluminum	Aluminum	Aluminum
Number of LEDs	28 pcs CREE	10 pcs CREE	12 pcs CREE
Available color temperature (Kelvin)	3000/4000/5000	3000/4000/5000	3000/4000/5000
Angle	11°	11°	11°
Cable length	33 ft	33 ft	23 ft
Size (wxh)	14 x 12.5 inch	10.2 x 8.3 inch	9.1 x 7.1 inch
Warranty	5 years	5 years	5 years
Pole	Suitable for poles with a diameter up to 9"	Suitable for poles with a diameter up to 5"	Suitable for poles with a diameter up to 4"

All fixtures are available in:

Special colors available upon request



Black



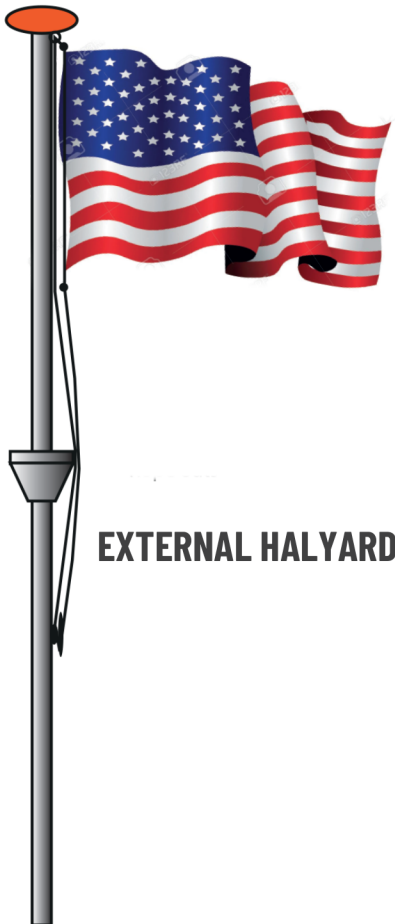
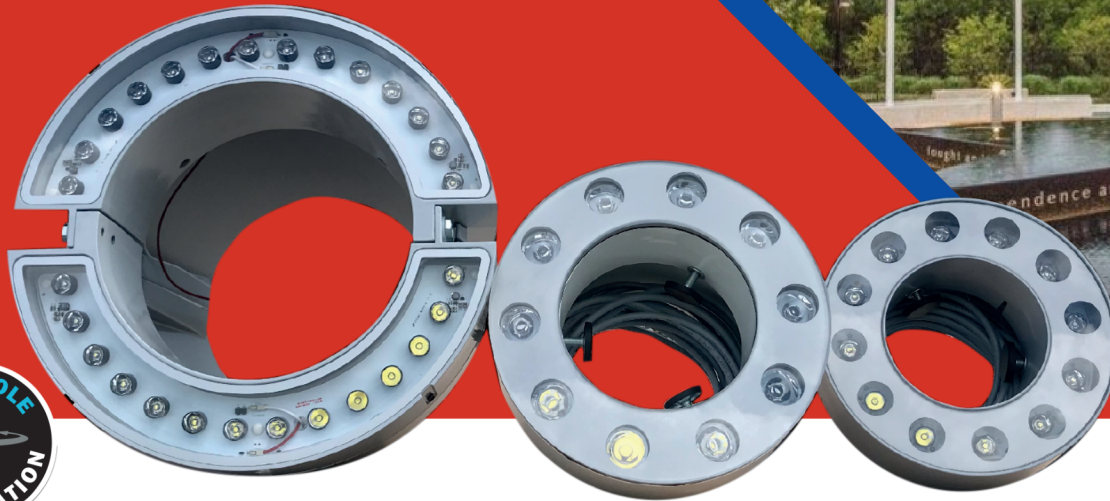
Grey



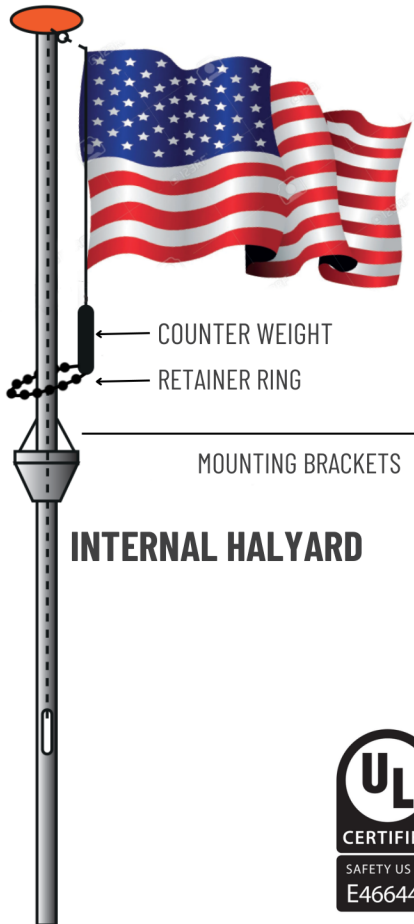
White



HALYARD SYSTEM



EXTERNAL HALYARD



INTERNAL HALYARD

